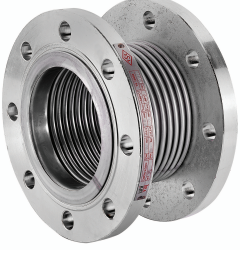


> DÖNER FLANŞLI METAL KOMPANSATÖR METAL EXPANSION JOINT

UEJ-0901

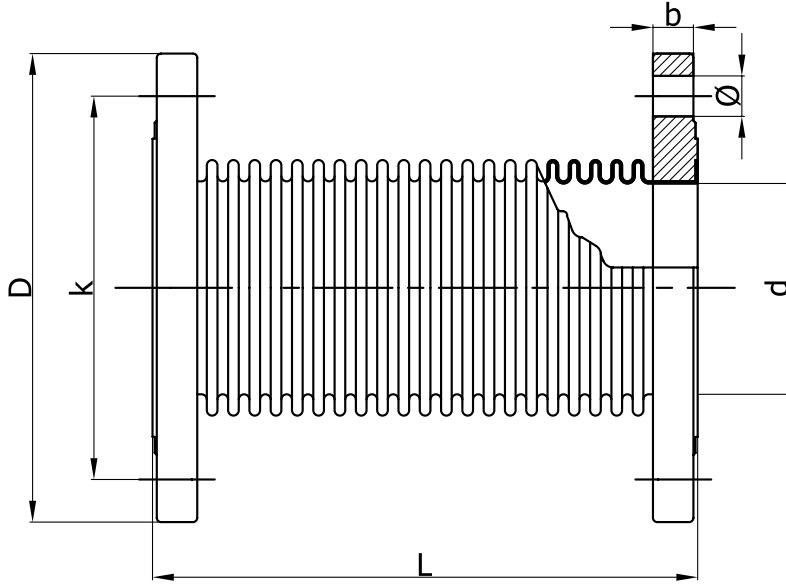


Basınç Sınıfı : PN16 / PN25
Körük : Paslanmaz çelik
Flanş : Karbon çelik
Genleşme : 30 mm / 60 mm
Flanşlı

Pressure Rating : PN16 / PN25
Bellow : Stainless steel
Flange : Carbon steel
Expansion : 30 mm / 60 mm
Flanged

| PRODUCT | SIZE |
|--------------|--------|
| UEJ-0901X025 | DN 25 |
| UEJ-0901X032 | DN 32 |
| UEJ-0901X040 | DN 40 |
| UEJ-0901X050 | DN 50 |
| UEJ-0901X065 | DN 65 |
| UEJ-0901X080 | DN 80 |
| UEJ-0901X100 | DN 100 |
| UEJ-0901X125 | DN 125 |
| UEJ-0901X150 | DN 150 |
| UEJ-0901X200 | DN 200 |
| UEJ-0901X250 | DN 250 |

CERTIFICATIONS



MALZEME / MATERIALS

Körük / Bellow : Paslanmaz çelik / Stainless steel
Layner / Liner : Paslanmaz çelik / Stainless steel
Flanş / Flange : Karbon çelik / Carbon steel

GENEL ÖZELLİKLER / GENERAL PROPERTIES

Standart No : TS 10880
Basınç Sınıfı / Pressure Rating : PN16 / PN25
Maksimum Çalışma Sıcaklığı / Maximum Working Temp. : 420 °C

| DN | L (30mm) | L (45mm) | L (60mm) | D | d | k | b | n | Ø |
|-----|----------|----------|----------|-----|-----|-----|----|----|----|
| 25 | 110 | | | 115 | 43 | 85 | 18 | 4 | 14 |
| 32 | 110 | | | 140 | 43 | 100 | 18 | 4 | 18 |
| 40 | 120 | 150 | | 150 | 49 | 110 | 18 | 4 | 18 |
| 50 | 120 | 150 | | 165 | 61 | 125 | 18 | 4 | 18 |
| 65 | 120 | 150 | 180 | 185 | 77 | 145 | 18 | 4 | 18 |
| 80 | 120 | 150 | 180 | 200 | 89 | 160 | 20 | 8 | 18 |
| 100 | 120 | 150 | 185 | 220 | 115 | 180 | 20 | 8 | 18 |
| 125 | 125 | 155 | 190 | 250 | 140 | 210 | 22 | 8 | 18 |
| 150 | 130 | 155 | 200 | 285 | 169 | 240 | 22 | 8 | 22 |
| 200 | 150 | 190 | 230 | 340 | 220 | 295 | 24 | 12 | 22 |
| 250 | 165 | 205 | 245 | 405 | 274 | 355 | 26 | 12 | 26 |