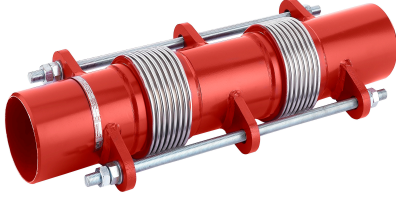


> DİLATASYON KOMPANSATÖRÜ (KAYNAKLI) SISMIC EXPANSION JOINT

UDJ-0907



CERTIFICATIONS

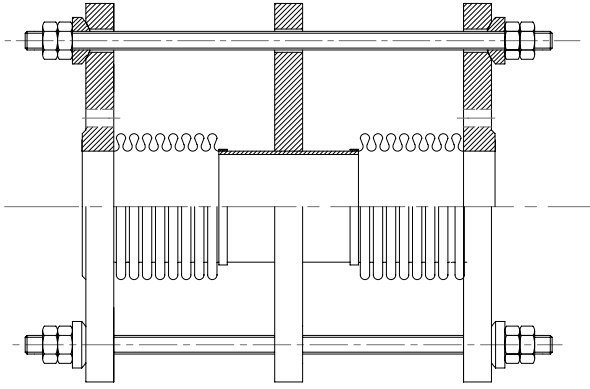


Basınç Sınıfı : PN16
Körük : Paslanmaz çelik
Boru : Karbon çelik

Pressure Rating : PN16
Bellow : Stainless steel
Pipe : Carbon steel

Genleşme / Expansion:
X=±60 mm Y,Z: ±25 mm
X=±60 mm Y,Z: ±50 mm
X=±60 mm Y,Z: ±75 mm
X=±60 mm Y,Z: ±100 mm

PRODUCT	SIZE
UDJ-0907X025	DN 25
UDJ-0907X032	DN 32
UDJ-0907X040	DN 40
UDJ-0907X050	DN 50
UDJ-0907X065	DN 65
UDJ-0907X080	DN 80
UDJ-0907X100	DN 100
UDJ-0907X125	DN 125
UDJ-0907X150	DN 150
UDJ-0907X200	DN 200
UDJ-0907X250	DN 250



MALZEME / MATERIALS

Körük / Bellow : Paslanmaz çelik / Stainless steel
Layner / Liner : Paslanmaz çelik / Stainless steel
Boru / Pipe : Karbon çelik / Carbon steel
Mafsallar / Blade : Karbon çelik / Carbon steel
Flaş / Flange : Karbon çelik / Carbon steel

GENEL ÖZELLİKLER / GENERAL PROPERTIES

Standart No : TS 10880
Basınç Sınıfı / Pressure Rating : PN16
Maksimum Çalışma Sıcaklığı / Maximum Working Temp. : 420 °C

DN	TİP 1 / TYPE 1						TİP 2 / TYPE 2					TİP 3 / TYPE 3				
	GENLEŞME / EXPANSION						GENLEŞME / EXPANSION					GENLEŞME / EXPANSION				
	X		Y		(L-MM)	X		Y		(L-MM)	X		Y		(L-MM)	
TOTAL	±	TOTAL	±	TOTAL		±	TOTAL	±	TOTAL		±	TOTAL	±			
30	1 1/4"	30	15	25	25	595	30	15	50	50	620	30	15	75	75	690
40	1 1/2"	30	15	25	25	620	30	15	50	50	650	30	15	75	75	720
50	2"	30	15	25	25	580	30	15	50	50	615	30	15	75	75	690
65	2 1/2"	30	15	25	25	620	30	15	50	50	660	30	15	75	75	735
		45	23	25	25	665	45	23	50	50	705	45	23	75	75	780
		60	30	25	25	710	60	30	50	50	750	60	30	75	75	825
80	3"	30	15	25	25	700	30	15	50	50	730	30	15	75	75	790
		45	23	25	25	750	45	23	50	50	780	45	23	75	75	835
		60	30	25	25	795	60	30	50	50	830	60	30	75	75	885
100	4"	30	15	25	25	750	30	15	50	50	790	30	15	75	75	825
		45	23	25	25	805	45	23	50	50	840	45	23	75	75	860
		60	30	25	25	860	60	30	50	50	895	60	30	75	75	915
125	5"	30	15	25	25	765	30	15	50	50	810	30	15	75	75	865
		45	23	25	25	810	45	23	50	50	875	45	23	75	75	910
		60	30	25	25	875	60	30	50	50	920	60	30	75	75	950
150	6"	30	15	25	25	840	30	15	50	50	890	30	15	75	75	945
		45	23	25	25	890	45	23	50	50	940	45	23	75	75	995
		60	30	25	25	940	60	30	50	50	985	60	30	75	75	1040
200	8"	30	15	25	25	885	30	15	50	50	960	30	15	75	75	1050
		45	23	25	25	935	45	23	50	50	1015	45	23	75	75	1100
		60	30	25	25	990	60	30	50	50	1065	60	30	75	75	1150
250	10"	30	15	25	25	875	30	15	50	50	930	30	15	75	75	1040
		45	23	25	25	830	45	23	50	50	985	45	23	75	75	1095
		60	30	25	25	985	60	30	50	50	1040	60	30	75	75	1150